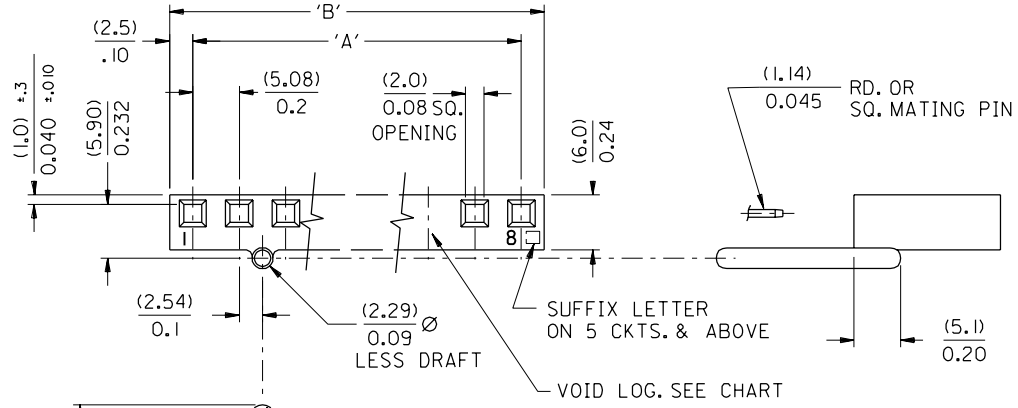
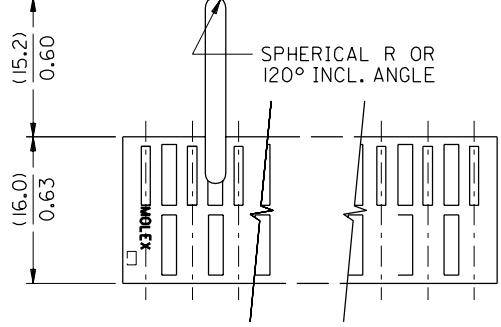


PART NO. 10-13-*****
 DWG. NO. SDE-3011-*****



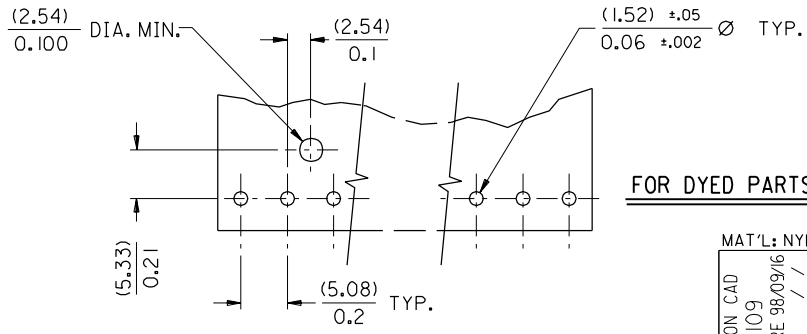
PART No.	ENG. No.	No OF CKTS.	DIM. A		DIM. B	
E-3011-02 *		2	(5.08) ±.10	(10.16) +0.00		
			.200 ±.004	.400 ±.015		
-03		3	(10.16) *	(15.24) ±		
			.400 *	.600 ±		
-04		4	(15.24) *	(20.32) ±		
			.600 *	.800 ±		
-05		5	(20.32) *	(25.40) ±		
			.800 *	1.000 ±		
-06		6	(25.40) *	(30.48) ±		
			1.000 *	1.200 ±		
-07		7	(30.48) ±.20	(35.56) ±		
			1.200 ±.008	1.400 ±		
-08		8	(35.56) *	(40.64) ±		
			1.400 *	1.600 ±		
-09		9	(40.64) *	(45.72) ±		
			1.600 *	1.800 ±		
-10		10	(45.72) *	(50.8) ±		
			1.800 *	2.000 ±		
-11		11	(50.8) *	(55.88) +0.30		
			2.000 *	2.200 +0.00		
-12		12	(55.88) ±.25	(60.96) ±		
			2.200 ±.010	2.400 ±		
-13		13	(60.96) *	(66.04) ±		
			2.400 *	2.600 ±		
-14		14	(66.04) *	(71.12) ±		
			2.600 *	2.800 ±		
-15		15	(71.12) *	(76.20) ±		
			2.800 *	3.000 ±		
-16		16	(76.20) *	(81.28) +0.30		
			3.000 *	3.200 +0.00		
-17		17	(81.28) ±.30	(86.36) ±		
			3.200 ±.012	3.400 ±		
-18		18	(86.36) *	(91.44) ±		
			3.400 *	3.600 ±		
-19		19	(91.44) *	(96.52) ±		
			3.600 *	3.800 ±		
E-3011-20		20	(96.52) *	(101.60) ±		
			3.800 *	4.000 ±		

FOR TOOLED PARTS WITH ACTUAL PEG LOCATION SEE PAGE 2 & 3



NOTES :

1. THIS HOUSING FOR USE WITH AE-3003-NA WAFER ASSEMBLY.
2. FOR PARTS WITH VOIDS SEE SHEET No.2.
3. PRODUCT SPECIFICATION NUMBER APPLICABLE IS 10-39.



RECOMMENDED P.C. BOARD DIMENSIONS WHEN USED WITH E-3003-N WAFER

SCALE : NONE

DENOTES No. OF CKTS

FOR DYED PARTS SEE SHEET No.3

SUFFIX LETTER-DENOTES PEG LOCATION I.E. 'A' INDICATES PEG BETWEEN CKTS 1 & 2, 'B' BETWEEN CKTS 2 & 3 ETC.

DYED PARTS 'D'=DYED BLANK=NOT DYED

VOID LOC. BLANK=NO VOIDS '1'=VOID IN 1st CKT. '2'=VOID IN 2nd CKT.

MAT'L: NYLON 6/6 94V-2		COLOR - NATURAL		DIMENSIONS:		SHT		REV	
REDRAWN ON CAD		QUALITY SYMBOLS		GENERAL TOLERANCES: (UNLESS SPECIFIED)		SCALE 2 : 1		DESIGN UNITS	
EC NO. E90109		MAJOR		mm INCH		mm INCH		THIRD ANGLE PROJECTION	
DRWN: P. MOORE 98/09/16		CRITICAL		4 PLACES ±0. ±.		mm INCH		mm ONLY	
CHK: / /		C		3 PLACES ±0. ±.008		DRAWN BY & DATE		P. MOORE 98/09/16	
APPR: / /				2 PLACES ±0.20 ±.016		CHECKED BY & DATE		MGOONEY 08/03/99	
REV				1 PLACE ±0.41 ±.		APPROVED BY & DATE		MWILHITE 08/03/99	
G				ANGULAR: ± 1/2 °		CAD FILENAME		PM7.DGN	
				DRAFT WHERE APPLICABLE MUST REMAIN WITHIN DIMENSIONS		MATERIAL NO.		DRAWING NO.	
						10-13-****		SDE-3011 -****	
						MOLEX INCORPORATED		SHEET NO.	
						THIS DRAWING CONTAINS INFORMATION THAT IS PROPRIETARY TO MOLEX INCORPORATED AND SHOULD NOT BE USED WITHOUT WRITTEN PERMISSION.		1 OF 3	

	10	9	8	7	6	5	4	3	2	1			
	PART No.	ENG. No.	No OF CKT'S	PEG LOCATION	PART No.	ENG. No.	No OF CKT'S	PEG LOCATION	PART No.	ENG. No.	No OF CKT'S	PEG LOC.	VOID CKT. LOC.
F	10-13-1024	E-3011-02 A	2	BETWEEN C'KTS. 1 & 2	10-13-1105	E-3011-10 E	10	BETWEEN C'KTS. 5 & 6	10-13-1042	E-3011-04B-2	4	BTW. 2 & 3	2
	↑ -1034	-03 B	3	BETWEEN C'KTS. 2 & 3	↑ -1124	↑ -12 C	12	BETWEEN C'KTS. 3 & 4					
	-1044	-04	4		↑ -1035	↑ -3 A	3	↑ ↑ 1 & 2					
	-1055	-05	5		↑ -1056	↑ -5 A	5	↑ ↑ 1 & 2					
	-1064	-06	6		↑ -1067	↑ -6 A	6	↑ ↑ 1 & 2					
	-1075	-07	7		↑ -1076	↑ -7 A	7	↑ ↑ 1 & 2					
	-1085	-08	8		↑ -1115	↑ -11 C	11	↑ ↑ 3 & 4					
	-1094	-09	9		↑ -1086	↑ -8 E	8	↑ ↑ 5 & 6					
	-1106	-10	10		↑ -1077	↑ -7 F	7	↑ ↑ 6 & 7					
	-1114	-11	11		↑ -1126	↑ -12 H	12	↑ ↑ 8 & 9					
	-1125	-12	12		↑ NOT TOOLED	↑ -6 E	6	↑ ↓ 5 & 6					
	-1134	-13	13		↑ NOT TOOLED	↑ -7 D	7	↑ ↑ BETWEEN C'KTS. 4 & 5					
	-1144	-14	14		↑ NOT TOOLED	↑ -4 A	4	↑ ↑ BETWEEN C'KTS. 1 & 2					
	-1154	-15	15		↑ I 10-13-1109	↑ -10 A	10	↑ ↑ BETWEEN C'KTS. 1 & 2					
	-1164	-16	16		↑ I 10-13-1096	↑ -9 H	9	↑ ↑ BETWEEN C'KTS. 8 & 9					
	-1174	-17	17		↑ I 10-13-1206	↑ -20 A	20	↑ ↑ BETWEEN C'KTS. 1 & 2					
	-1184	-18	18										
	-1194	-19	19										
	-1204	-20 B	20	BETWEEN C'KTS. 2 & 3									
	-1054	-05 C	5	BETWEEN C'KTS. 3 & 4									
	-1065	-06 C	6	BETWEEN C'KTS. 3 & 4									
	-1066	-06 D	6	BETWEEN C'KTS. 4 & 5									
	↓ -1074	-07 C	7	BETWEEN C'KTS. 3 & 4									
	10-13-1084	-08 C	8	BETWEEN C'KTS. 3 & 4									
	NOT TOOLED	-08 F	8	BETWEEN C'KTS. 6 & 7									
	10-13-1095	-09 C	9	BETWEEN C'KTS. 3 & 4									
B	10-13-1104	E-3011-10 D	10	BETWEEN C'KTS. 4 & 5	10-13-	E-3011							

THE ABOVE PARTS ARE WITH VOIDS

SUFFIX LETTER

FOR DYED PARTS SEE SHEET No. 3.

NOTES:

1. THE ABOVE CHART IS A LIST OF EXISTING PARTS. (PARTS NOT SHOWN: CONTACT SALES OFFICE)
2. FOR DIMENSIONS SEE SDE-3011-***, PAGE 1.

REDRAWN ON CAD EC NO. E90109 DRWN: P.MOORE 98/09/20 CHK: / / / / APPR: / / / / G	QUALITY SYMBOLS MAJOR = CRITICAL = C =	GENERAL TOLERANCES: (UNLESS SPECIFIED)		SCALE : DESIGN UNITS <input type="checkbox"/> mm <input type="checkbox"/> INCH	DRAWN BY & DATE P.MOORE 98/09/20	DIMENSIONS: <input type="checkbox"/> mm <input type="checkbox"/> INCH <input type="checkbox"/> mm ONLY	SHT REV	
		4 PLACES ±0. ±.	3 PLACES ±0. ±.	2 PLACES ±0. ±.	1 PLACE ±0. ±.	CHECKED BY & DATE MGOONEY 08/03/99	TITLE: HOUSING-KK (5.08)/.200 WITH POLARIZING PEG (CRIMP TYPE TYPE TERMINAL)	REVISE ON CAD ONLY
		ANGULAR: ± 1/2°				APPROVED BY & DATE MWILHITE 08/03/99	MOLEX INCORPORATED	
		DRAFT WHERE APPLICABLE MUST REMAIN WITHIN DIMENSIONS				CAD FILENAME PM14.DGN	MATERIAL NO. 10-13-****	DRAWING NO. SDE-3011-****

THIS DRAWING CONTAINS INFORMATION THAT IS PROPRIETARY TO MOLEX INCORPORATED AND SHOULD NOT BE USED WITHOUT WRITTEN PERMISSION.